



# EMU Terminal Emulator

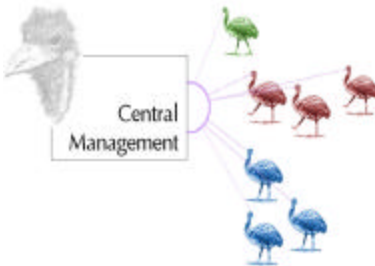
## EMU Terminal Emulator

has won awards for how quickly and easily it can be installed and used with IBM and Unisys enterprise hosts. And administrators value its tiny footprint and central management capabilities.

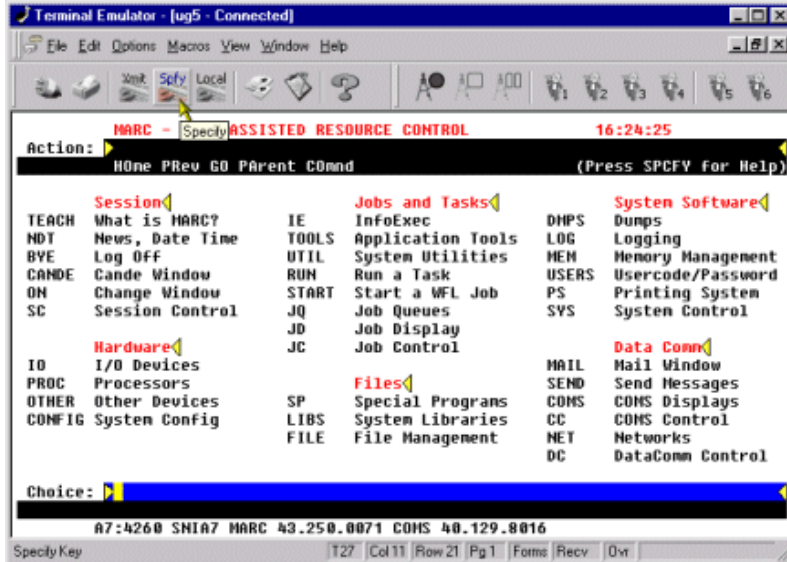
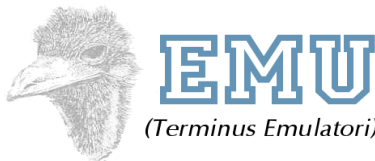
Written in 100% C++, EMU is a single ".exe" executable. Thus there is no need to install third party ".dll" files or manage ".dll" conflicts.

The lean EMU 1.4 MB executable can be run from a server as well as from a PC. EMU can also be launched from a link on a web page.

On a typical PC EMU uses about 3 MB of RAM and 2%-4% of processor load. The EMU distribution is small enough to fit on a single floppy disk.



Central management features allow you to control diverse groups of users with a small set of unique configurations.



EMU provides telnet connectivity to IBM S/390, AS/400 and iSeries as well as Unisys ClearPath/NX and A and V Series hosts via TN3270, TN5252 and TNT27 (TD830) protocols.

Once installed EMU takes up only 2.5 MB of hard disk.

EMU can be set to reference a central configuration that holds the things administrators want to control — which hosts to connect to, emulation options, screen colors, keyboard settings, macros, and which options users are allowed to change.

And EMU enables Unisys hosts to print to PC printers.

Finally, EMU runs well on Microsoft Windows 2000 and XP as well as NT 4.0, ME, 98, and 95 PC systems.

## System Requirements

- PC Operating System
  - Microsoft Windows XP, 2000, ME, 98, 95, NT
- PC Minimum Hardware
  - 8 MB RAM
  - 486 processor
- Host Systems
  - IBM 3270 telnet server
  - IBM 5250 telnet server
  - Unisys T27 (TD830) telnet server

## Typical PC Load

- On Pentium 200 class system.
  - 3.2 MB RAM
  - 2%-4% CPU load